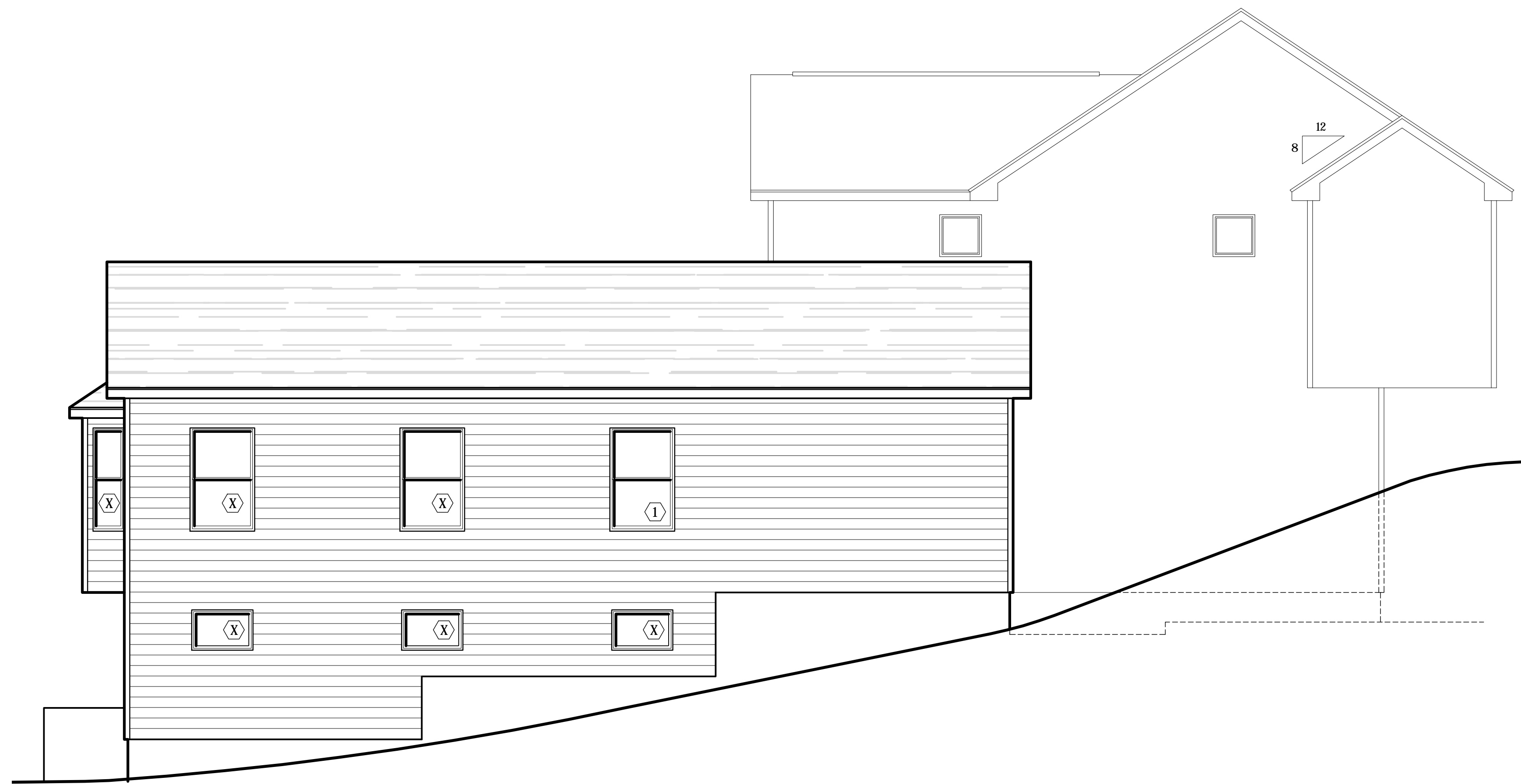
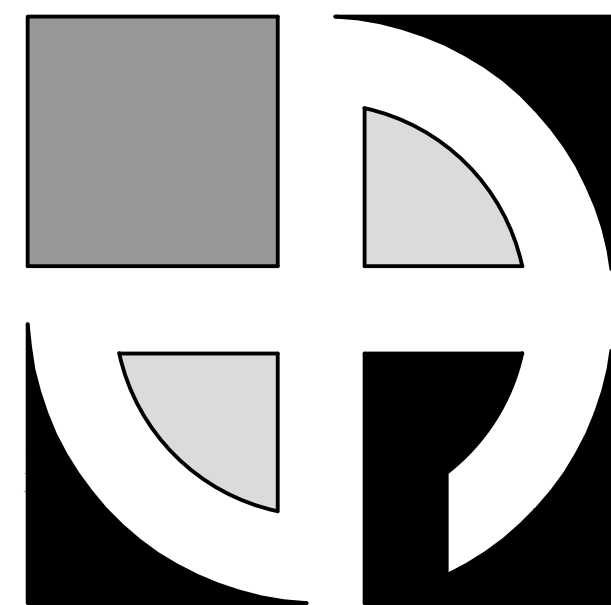




A2.1 | **Front Elevation**
 1/4"=1'-0"



A2.2 | **Right Elevation**
 1/4"=1'-0"



D E A N
 ARCHITECTS

www.deanarchitects.com

PRELIMINARY
 NOT FOR
 CONSTRUCTION



3284 WALDEN AVENUE
 DEPEW, NEW YORK 14043
 PHONE: (716) 651-0381
 FAX: (716) 651-0382

19-299

Project For:
Zydel Residence
 8160 Hillside St.
 Angola, NY

No.	Description	Date	By

DATE:
 10-19-2019
 DRAWN BY:
 K. Martell
 CHECKED BY:
 M. Dean
 SCALE:
 1/4"= 1'-0"

Preliminary Elevations

A2

