

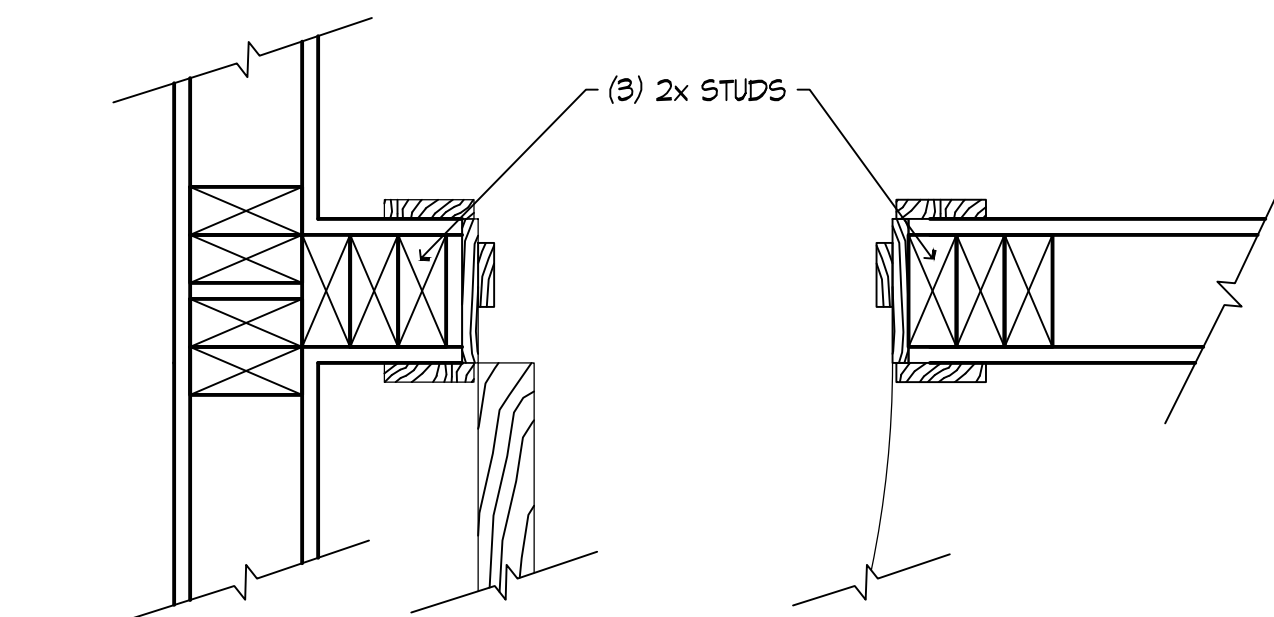
3/20/2020 7:04 PM C:\USERS\THORNTON\GDDLE_DRAWING_ARCHITECT\PROJECTS_2019_19-012_GERACE_RESIDENCE_ADDITION_ARCHN NY_SF_400-CONSTRUCTION_DOCUMENTATION_GERACE_RESIDENCE-RES-MAINPLANING_P10447/2020_236.PN

DOOR SCHEDULE						
#	HAND	LOCATION	SIZE		DESCRIPTION	NOTES
			WIDTH	HEIGHT		
LOWER LEVEL						
000	---	STORAGE ENTRY	(2) 3'-0"	6'-8"	DOUBLE EXTERIOR DOOR	
MAIN LEVEL						
010	---	LIVING ROOM	6'-0"	7'-0"	SLIDING GLASS	LOCKSET KEYED TO MATCH EXISTING
012	LH	CHRISTMAS TREE STOR.	3'-0"	7'-0"		SECRET DOOR IN BOOKSHELF

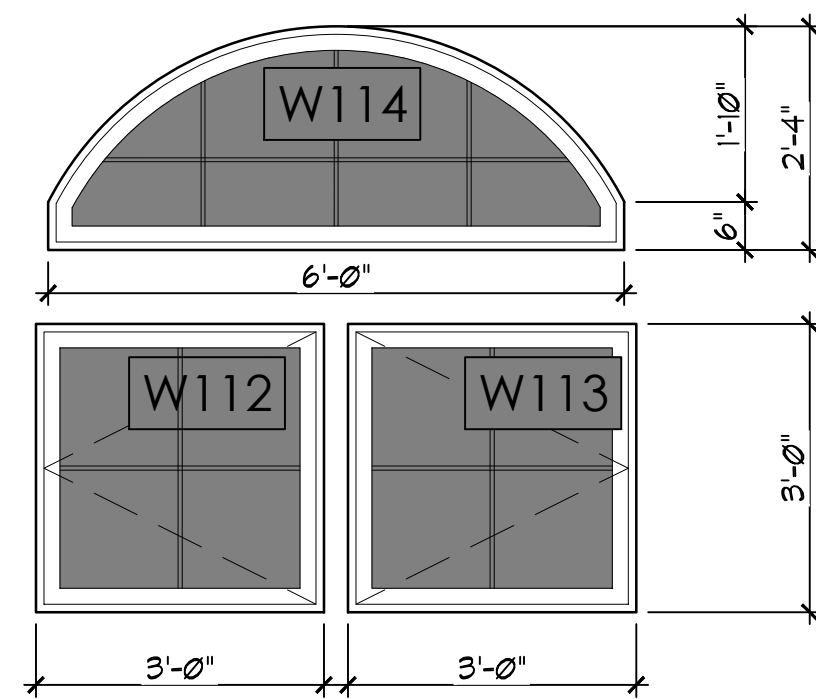
WINDOW SCHEDULE						WINDOWS: ALL VINYL TO MATCH EXISTING	
#	LOCATION	WINDOW SIZE	GLASS TYPE	WINDOW TYPE	NOTES		
LOWER LEVEL							
W001	STORAGE	2'-6" x 5'-0"	LOW-E	DBL. HUNG	(1)(2)		
W002	STORAGE	2'-6" x 5'-0"	LOW-E	DBL. HUNG	(1)(2)		
MAIN LEVEL							
W100	NOT USED			NOT USED			
W101	NOT USED			NOT USED			
W102	NOT USED			NOT USED			
W103	NEW LIVING ROOM	3'-6" x 6'-0"	LOW-E	CASEMENT	(1)(5)		
W104	NEW LIVING ROOM	3'-6" x 6'-0"	LOW-E	CASEMENT	(1)(5)		
W105	NEW LIVING ROOM	SEE DETAIL B/A2.1	LOW-E	FIXED	(1)(5)		
W106	NEW LIVING ROOM	2'-6" x 6'-0"	LOW-E	DBL. HUNG	(1)		
W107	NEW LIVING ROOM	2'-6" x 6'-0"	LOW-E	DBL. HUNG	(1)		
W108	NEW LIVING ROOM	2'-6" x 6'-0"	LOW-E	DBL. HUNG	(1)		
W109	NEW LIVING ROOM	2'-6" x 6'-0"	LOW-E	DBL. HUNG	(1)		
W110	NEW LIVING ROOM	2'-6" x 6'-0"	LOW-E	CASEMENT	(1)(6)		
W111	NEW LIVING ROOM	2'-6" x 2'-0"	LOW-E	FIXED	(1)(6)		
W112	NEW LIVING ROOM	3'-6" x 3'-0"	LOW-E	FIXED	(1)(8)		
W113	NEW LIVING ROOM	3'-6" x 3'-0"	LOW-E	FIXED	(1)(8)		
W114	NEW LIVING ROOM	SEE DETAIL E/A2.1	LOW-E	FIXED	(1)(8)		
W115	NEW LIVING ROOM	2'-6" x 6'-0"	LOW-E	CASEMENT	(1)(7)		
W116	NEW LIVING ROOM	2'-6" x 2'-0"	LOW-E	FIXED	(1)(7)		
W117	NEW LIVING ROOM	3'-4" x 3'-0"	LOW-E	DBL. HUNG	(1)(5)		
UPPER LEVEL							
W200	BEDROOM	3'-6" x 4'-6"	LOW-E	DBL. HUNG	(1)(3)(4)		
W201	BEDROOM	3'-6" x 4'-6"	LOW-E	DBL. HUNG	(1)(3)(4)		

- DOOR & WINDOW KEYED NOTES:**
- NEW WINDOWS TO HAVE LOW-E GLASS IN ALL SASHES
 - SAFETY GLASS AS REQUIRED IN IRC 2015 (AS ADOPTED BY NYS) SECTION R308 IN ALL DOORS AND WINDOWS
 - EGRESS WINDOW PER IRC 2015 SECTION R310.1. (ALL EMERGENCY ESCAPE AND RESCUE OPENINGS SHALL HAVE A MINIMUM NET CLEAR OPENING OF 5.7 SQUARE FEET. WITH THE EXCEPTION OF GRADE FLOOR OPENINGS, GRADE FLOOR OPENINGS SHALL HAVE A MINIMUM NET CLEAR OPENING OF 5 SQUARE FEET)
 - FIELD VERIFY AVAILABLE WALL OPENING SIZE PRIOR TO ORDERING WINDOWS
 - SEE DETAIL B/A2.1 FOR WINDOW CONFIGURATION
 - SEE DETAIL C/A2.1 FOR WINDOW CONFIGURATION
 - SEE DETAIL D/A2.1 FOR WINDOW CONFIGURATION
 - SEE DETAIL E/A2.1 FOR WINDOW CONFIGURATION

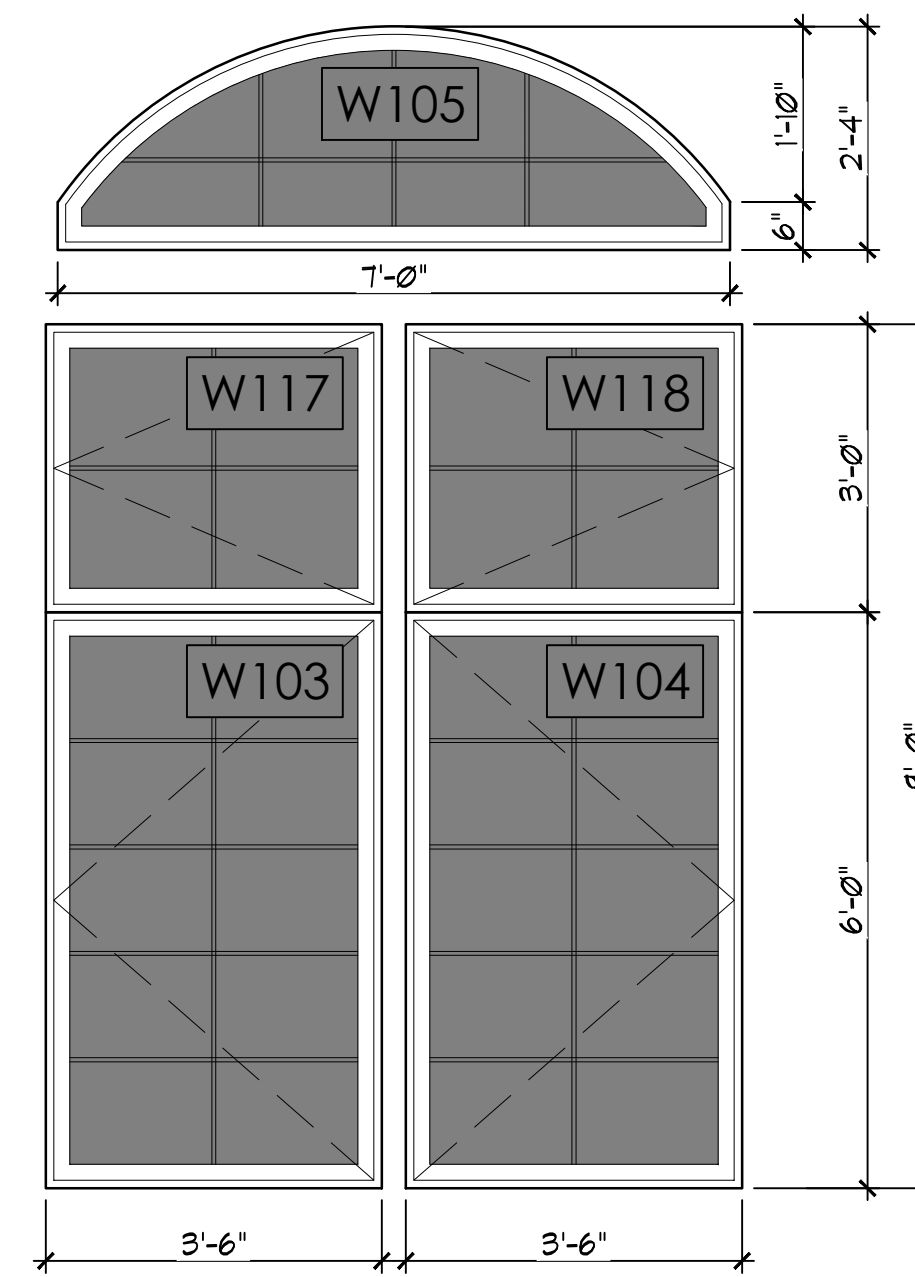
- NOTE:**
- ALL DOORS ARE TO BE CENTERED UNLESS DIMENSIONED OTHERWISE OR UNLESS CLEARLY OFF CENTER. WHERE DOORS ARE NOT DIMENSIONED, OFF CENTER OR OTHERWISE NOTED, USE THIS DETAIL. VERIFY TRIMMER SIZE & DETAILS WITH FRAMING PLAN & STRUCTURAL DETAILS.



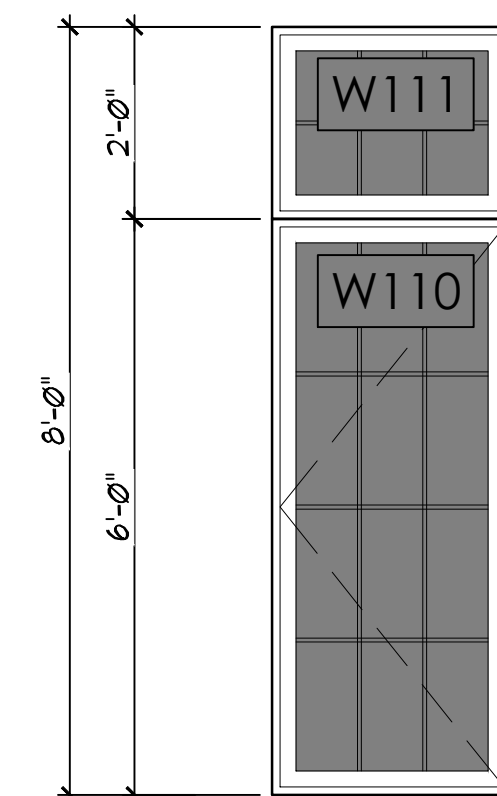
G TYPICAL DOOR FRAMING DETAIL
SCALE: 2" = 1'-0"



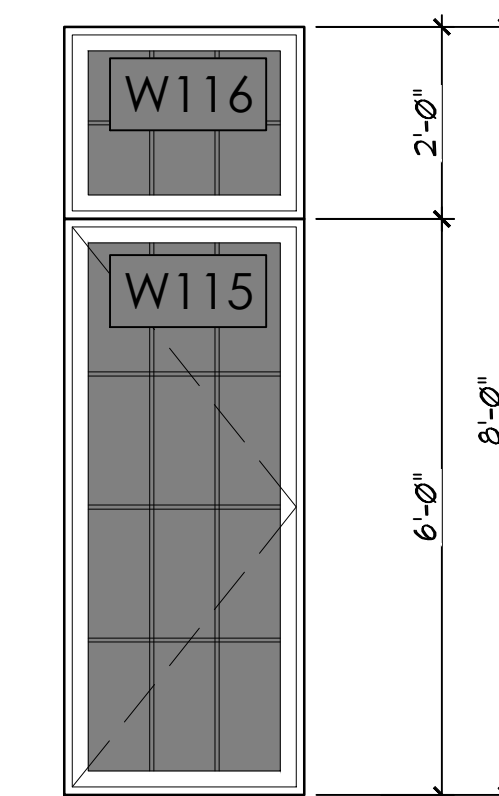
E WINDOW DETAIL
SCALE: 1/2" = 1'-0"



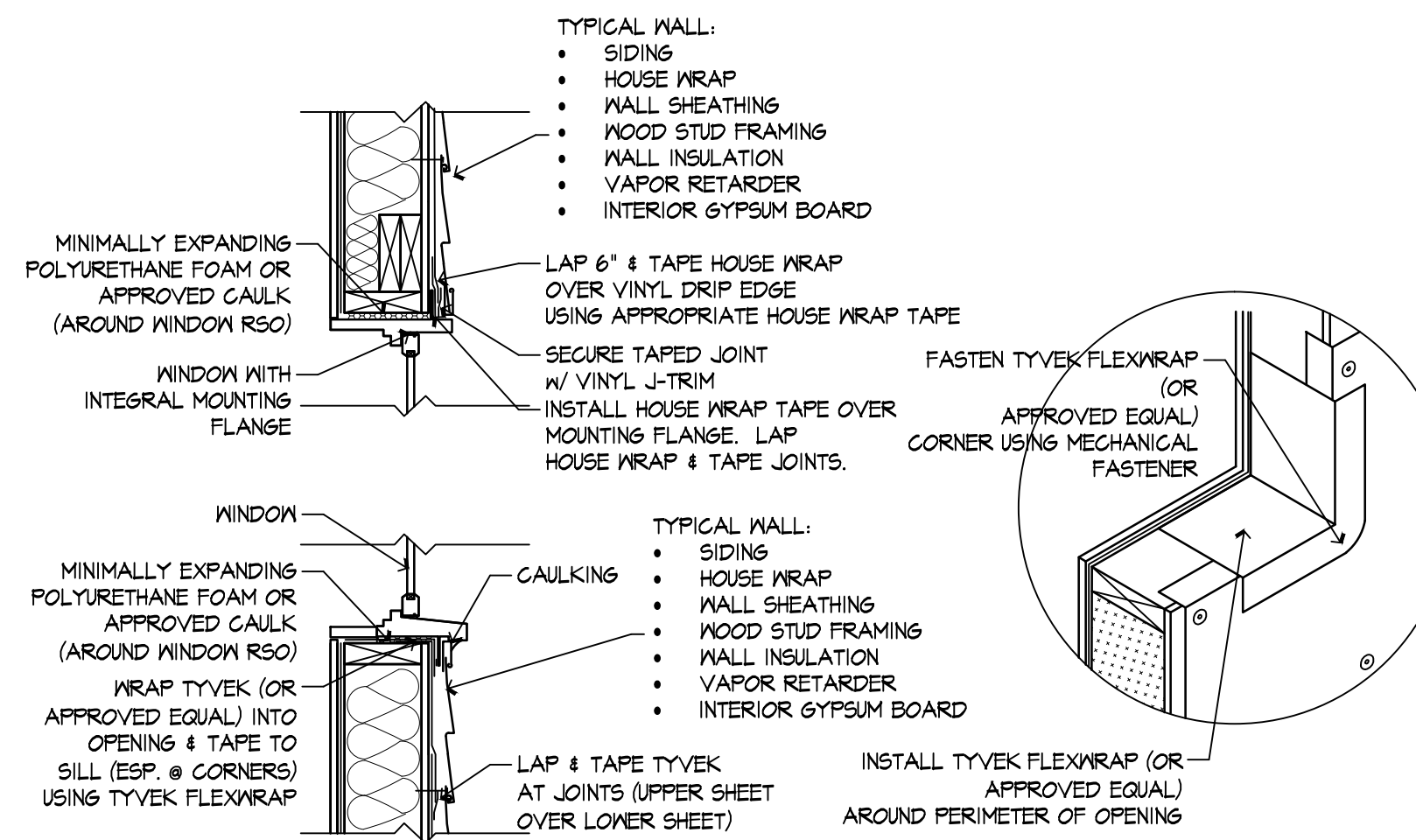
B WINDOW DETAIL
SCALE: 1/2" = 1'-0"



D WINDOW DETAIL
SCALE: 1/2" = 1'-0"



C WINDOW DETAIL
SCALE: 1/2" = 1'-0"



D WINDOW HEAD & SILL DETAIL
N.T.S.

NOT USED

A WINDOW DETAIL
SCALE: 1/2" = 1'-0"

PRELIMINARY

HAVEN
architecture

716.646.8251
www.havenarchitecture.com

WARNING: IT IS A VIOLATION OF SECTION 2015 SUBSECTION 2 OF THE NEW YORK STATE EDUCATION LAW FOR ANY PERSON UNLESS ACTING UNDER THE DIRECTION OF A LICENSED ARCHITECT OR PROFESSIONAL ENGINEER TO ALTER IN ANY WAY PLANS SPECIFICATIONS OR REPORTS TO WHICH THE SEAL OF A LICENSED ARCHITECT OR PROFESSIONAL ENGINEER HAS BEEN APPLIED.

DOCUMENT STATUS

- PRELIMINARY PROGRESS
 BID SET PERMIT SET
 FINAL FOR CONSTRUCTION
ISSUED BY JACOB FLITTON ARCHITECT PLLC

GERACE RES.
11240 Hiller Road
Akron NY 14001

Job # 19-012

Revisions

Date: 2020.03.30

Title: Main Floor Plan

TO THE BEST OF MY KNOWLEDGE BELIEF & PROFESSIONAL JUDGMENT, ALL PLANS, DRAWINGS SPECIFICATIONS ETC. INCLUDED IN THIS DRAWING & PERMIT PACKAGE ARE IN COMPLIANCE WITH THE MOST CURRENT IRC 2015 (AS ADOPTED BY NEW YORK STATE) ENERGY CODE.

REGISTERED ARCHITECT
JACOB T. FLITTON
STATE OF NEW YORK
037972

Sheet: **A2.1**